



Forbidden V

Sample ID: G1K0173-01

Matrix: Industrial Hemp

Test ID: 5021861

Source ID:

Date Sampled: 11/09/21

Date Accepted: 11/09/21

RDSP Farms

Results at a Glance

Total THC : 0.29 %

Total CBD : 7.6 %

Total CBG : 0.43 %

Pesticides : **PASS**

Percent Moisture : 10.5 % **PASS**



**ISO 17025
ACCREDITED
LABORATORY**

Eric Wendt
Chief Science Officer - 11/16/2021

These results relate only to the sample included on this report. The report may not be reproduced except in full, without the written permission of Green Leaf Lab.

This is for informational testing and is not compliance testing. Lab results apply to the sample as received.



Forbidden V

Sample ID: G1K0173-01

Matrix: Industrial Hemp

Test ID: 5021861

Source ID:

Date Sampled: 11/09/21

Date Accepted: 11/09/21

RDSP Farms

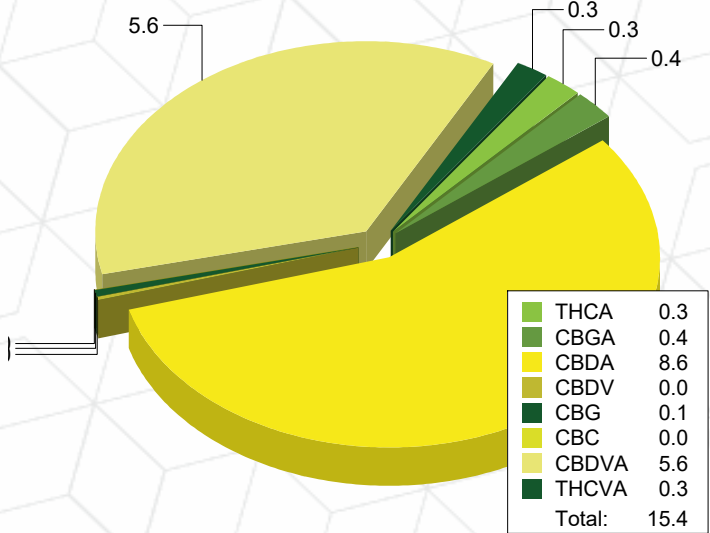
Potency Analysis

Date/Time Extracted: 11/11/21 13:42

Analysis Method/SOP: 215

Batch Identification: 2146037

	LOQ (%)	% by Wt.	mg/g	Cannabinoids Profile	
Total THC	0.010	0.29	2.9		
Total CBD	0.009	7.6	76		
Total CBG	0.0009	0.43	4.3		
THCA	0.0006	0.33	3.3		
delta 9-THC	0.0006	< LOQ	< LOQ		
delta 8-THC	0.005	< LOQ	< LOQ		
THCV	0.023	< LOQ	< LOQ		
THCVA	0.002	0.29	2.9		
CBD	0.002	< LOQ	< LOQ		
CBDA	0.002	8.6	86		
CBDV	0.006	0.041	0.41		
CBDVA	0.007	5.6	56		
CBN	0.013	< LOQ	< LOQ		
CBG	0.0009	0.073	0.73		
CBGA	0.0009	0.40	4		
CBC	0.010	0.012	0.12		



Moisture

Date/Time Extracted: 11/11/21 15:36

Analysis Method/SOP: 103

Moisture: 10.5 %

Action Level: 15%

Potency results are reported on a dry weight basis.

Total THC = delta 9-THC + (THCA * 0.877)

Total CBD = CBD + (CBDA * 0.877)

Total CBG = CBG + (CBGA * 0.878)

LOQ=Limit of Quantification, the lowest measurable concentration of an analyte.



**ISO 17025
ACCREDITED
LABORATORY**

Eric Wendt
Chief Science Officer - 11/16/2021

These results relate only to the sample included on this report. The report may not be reproduced except in full, without the written permission of Green Leaf Lab.

This is for informational testing and is not compliance testing. Lab results apply to the sample as received.



Forbidden V

Sample ID: G1K0173-01

Matrix: Industrial Hemp

Test ID: 5021861

Source ID:

Date Sampled: 11/09/21

Date Accepted: 11/09/21

RDSP Farms

Pesticide Analysis in ppm

Date/Time Extracted: 11/11/21 11:25

Analysis Method/SOP: 203

Analyte	Result	Action Level	LOD	LOQ	Units	Notes	Analyte	Result	Action Level	LOD	LOQ	Units	Notes
Abamectin	< LOQ	0.5		0.04	ppm		Acephate	< LOQ	0.4		0.04	ppm	
Acequinocyl	< LOQ	2		0.04	ppm		Acetamiprid	< LOQ	0.2		0.04	ppm	
Aldicarb	< LOQ	0.4		0.04	ppm		Azoxystrobin	< LOQ	0.2		0.04	ppm	
Bifenazate	< LOQ	0.2		0.04	ppm		Bifenthrin	< LOQ	0.2		0.04	ppm	
Boscalid	< LOQ	0.4		0.04	ppm		Carbaryl	< LOQ	0.2		0.04	ppm	
Carbofuran	< LOQ	0.2		0.04	ppm		Chlorantraniliprole	< LOQ	0.2		0.04	ppm	
Chlorfenapyr	< LOQ	1		0.04	ppm		Chlorpyrifos	< LOQ	0.2		0.04	ppm	
Clofentezine	< LOQ	0.2		0.04	ppm		Cyfluthrin	< LOQ	1		0.04	ppm	
Cypermethrin	< LOQ	1		0.04	ppm		Daminozide	< LOQ	1		0.04	ppm	
DDVP (Dichlorvos)	< LOQ	1		0.04	ppm		Diazinon	< LOQ	0.2		0.04	ppm	
Dimethoate	< LOQ	0.2		0.04	ppm		Ethoprophos	< LOQ	0.2		0.04	ppm	
Etofenprox	< LOQ	0.4		0.04	ppm		Etoxazole	< LOQ	0.2		0.04	ppm	
Fenoxycarb	< LOQ	0.2		0.04	ppm		Fenpyroximate	< LOQ	0.4		0.04	ppm	
Fipronil	< LOQ	0.4		0.04	ppm		Fonicamid	< LOQ	1		0.04	ppm	
Fludioxonil	< LOQ	0.4		0.04	ppm		Hexythiazox	< LOQ	1		0.04	ppm	
Imazalil	< LOQ	0.2		0.04	ppm		Imidacloprid	< LOQ	0.4		0.04	ppm	
Kresoxim-methyl	< LOQ	0.4		0.04	ppm		Malathion	< LOQ	0.2		0.04	ppm	
Metalaxyl	< LOQ	0.2		0.04	ppm		Methiocarb	< LOQ	0.2		0.04	ppm	
Methomyl	< LOQ	0.4		0.04	ppm		Methyl parathion	< LOQ	0.2		0.04	ppm	
MGK-264	< LOQ	0.2		0.04	ppm		Myclobutanil	< LOQ	0.2		0.04	ppm	
Naled	< LOQ	0.5		0.04	ppm		Oxamyl	< LOQ	1		0.04	ppm	
Paclobutrazol	< LOQ	0.4		0.04	ppm		Permethrins	< LOQ	0.2		0.04	ppm	
Phosmet	< LOQ	0.2		0.04	ppm		Piperonyl butoxide	< LOQ	2		0.1	ppm	
Prallethrin	< LOQ	0.2		0.04	ppm		Propiconazole	< LOQ	0.4		0.04	ppm	
Propoxur	< LOQ	0.2		0.04	ppm		Pyrethrins	< LOQ	1		0.1	ppm	
Pyridaben	< LOQ	0.2		0.04	ppm		Spinosad	< LOQ	0.2		0.04	ppm	
Spiromesifen	< LOQ	0.2		0.04	ppm		Spirotetramat	< LOQ	0.2		0.04	ppm	
Spiroxamine	< LOQ	0.4		0.04	ppm		Tebuconazole	< LOQ	0.4		0.04	ppm	
Thiacloprid	< LOQ	0.2		0.04	ppm		Thiamethoxam	< LOQ	0.2		0.04	ppm	
Trifloxystrobin	< LOQ	0.2		0.04	ppm								

ND - Compound not detected

Results above the Action Level fail state testing requirements and will be highlighted **Red**.



**ISO 17025
ACCREDITED
LABORATORY**

Eric Wendt
Chief Science Officer - 11/16/2021

These results relate only to the sample included on this report. The report may not be reproduced except in full, without the written permission of Green Leaf Lab.

This is for informational testing and is not compliance testing. Lab results apply to the sample as received.



Quality Control Potency

Batch: 2146037 - 215-Hemp

Blank(2146037-BLK2)							
Analyte	Result	LOQ	Units	%Recovery Limits	Extracted	Analyzed	Notes
THCA	< LOQ	0.02080	%		11/11/21 13:42	11/12/21 13:32	
THCA	< LOQ	0.021	%		11/11/21 13:42	11/12/21 13:32	
delta 9-THC	< LOQ	0.021	%		11/11/21 13:42	11/12/21 13:32	
delta 9-THC	< LOQ	0.02080	%		11/11/21 13:42	11/12/21 13:32	
delta 8-THC	< LOQ	0.1868	%		11/11/21 13:42	11/12/21 13:32	
delta 8-THC	< LOQ	0.19	%		11/11/21 13:42	11/12/21 13:32	
THCV	< LOQ	0.2103	%		11/11/21 13:42	11/12/21 13:32	
THCV	< LOQ	0.21	%		11/11/21 13:42	11/12/21 13:32	
THCVA	< LOQ	0.07842	%		11/11/21 13:42	11/12/21 13:32	
THCVA	< LOQ	0.078	%		11/11/21 13:42	11/12/21 13:32	
CBD	< LOQ	0.02080	%		11/11/21 13:42	11/12/21 13:32	
CBD	< LOQ	0.021	%		11/11/21 13:42	11/12/21 13:32	
CBDA	< LOQ	0.02080	%		11/11/21 13:42	11/12/21 13:32	
CBDA	< LOQ	0.021	%		11/11/21 13:42	11/12/21 13:32	
CBDV	< LOQ	0.2080	%		11/11/21 13:42	11/12/21 13:32	
CBDV	< LOQ	0.21	%		11/11/21 13:42	11/12/21 13:32	
CBDVA	< LOQ	0.06822	%		11/11/21 13:42	11/12/21 13:32	
CBDVA	< LOQ	0.068	%		11/11/21 13:42	11/12/21 13:32	
CBN	< LOQ	0.1244	%		11/11/21 13:42	11/12/21 13:32	
CBN	< LOQ	0.12	%		11/11/21 13:42	11/12/21 13:32	
CBG	< LOQ	0.03286	%		11/11/21 13:42	11/12/21 13:32	
CBG	< LOQ	0.033	%		11/11/21 13:42	11/12/21 13:32	
CBGA	< LOQ	0.03286	%		11/11/21 13:42	11/12/21 13:32	
CBGA	< LOQ	0.033	%		11/11/21 13:42	11/12/21 13:32	
CBC	< LOQ	0.37	%		11/11/21 13:42	11/12/21 13:32	
CBC	< LOQ	0.3729	%		11/11/21 13:42	11/12/21 13:32	

Reference(2146037-SRM2)							
Analyte	% Recovery	LOQ	Units	%Recovery Limits	Extracted	Analyzed	Notes
THCA	102	5.000E-4	%	80-120	11/11/21 13:42	11/11/21 21:21	
THCA	102	0.0005	%	80-120	11/11/21 13:42	11/11/21 21:21	
delta 9-THC	105	0.0005	%	80-120	11/11/21 13:42	11/11/21 21:21	
delta 9-THC	105	5.000E-4	%	80-120	11/11/21 13:42	11/11/21 21:21	
CBD	101	5.000E-4	%	80-120	11/11/21 13:42	11/11/21 21:21	
CBD	101	0.0005	%	80-120	11/11/21 13:42	11/11/21 21:21	
CBDA	102	5.000E-4	%	80-120	11/11/21 13:42	11/11/21 21:21	
CBDA	102	0.0005	%	80-120	11/11/21 13:42	11/11/21 21:21	

Pesticide Analysis



ISO 17025
ACCREDITED
LABORATORY

Eric Wendt
Chief Science Officer - 11/16/2021

These results relate only to the sample included on this report. The report may not be reproduced except in full, without the written permission of Green Leaf Lab.

This is for informational testing and is not compliance testing. Lab results apply to the sample as received.



Quality Control Pesticide Analysis (Continued)

Batch: 2146030 - 203

Blank(2146030-BLK1)							
Analyte	Result	LOQ	Units	%Recovery Limits	Extracted	Analyzed	Notes
Abamectin	< LOQ	0.04	ppm		11/11/21 11:25	11/12/21 20:39	
DDVP (Dichlorvos)	< LOQ	0.04	ppm		11/11/21 11:25	11/12/21 20:39	
Acephate	< LOQ	0.04	ppm		11/11/21 11:25	11/12/21 20:39	
Acequinocyl	< LOQ	0.04	ppm		11/11/21 11:25	11/12/21 20:39	
Acetamiprid	< LOQ	0.04	ppm		11/11/21 11:25	11/12/21 20:39	
Aldicarb	< LOQ	0.04	ppm		11/11/21 11:25	11/12/21 20:39	
Azoxystrobin	< LOQ	0.04	ppm		11/11/21 11:25	11/12/21 20:39	
Bifenazate	< LOQ	0.04	ppm		11/11/21 11:25	11/12/21 20:39	
Bifenthrin	< LOQ	0.04	ppm		11/11/21 11:25	11/12/21 20:39	
Boscalid	< LOQ	0.04	ppm		11/11/21 11:25	11/12/21 16:12	
Carbaryl	< LOQ	0.04	ppm		11/11/21 11:25	11/12/21 20:39	
Carbofuran	< LOQ	0.04	ppm		11/11/21 11:25	11/12/21 20:39	
Chlorantraniliprole	< LOQ	0.04	ppm		11/11/21 11:25	11/12/21 20:39	
Chlorfenapyr	< LOQ	0.04	ppm		11/11/21 11:25	11/12/21 16:12	
Chlorpyrifos	< LOQ	0.04	ppm		11/11/21 11:25	11/12/21 20:39	
Clofentezine	< LOQ	0.04	ppm		11/11/21 11:25	11/12/21 20:39	
Cyfluthrin	< LOQ	0.04	ppm		11/11/21 11:25	11/12/21 16:12	
Cypermethrin	< LOQ	0.04	ppm		11/11/21 11:25	11/12/21 16:12	
Daminozide	< LOQ	0.04	ppm		11/11/21 11:25	11/12/21 20:39	
Diazinon	< LOQ	0.04	ppm		11/11/21 11:25	11/12/21 20:39	
Dimethoate	< LOQ	0.04	ppm		11/11/21 11:25	11/12/21 20:39	
Ethoprophos	< LOQ	0.04	ppm		11/11/21 11:25	11/12/21 20:39	
Etofenprox	< LOQ	0.04	ppm		11/11/21 11:25	11/12/21 20:39	
Etoxazole	< LOQ	0.04	ppm		11/11/21 11:25	11/12/21 20:39	
Fenoxycarb	< LOQ	0.04	ppm		11/11/21 11:25	11/12/21 20:39	
Fenpyroximate	< LOQ	0.04	ppm		11/11/21 11:25	11/12/21 20:39	
Fipronil	< LOQ	0.04	ppm		11/11/21 11:25	11/12/21 16:12	
Flonicamid	< LOQ	0.04	ppm		11/11/21 11:25	11/12/21 20:39	
Fludioxonil	< LOQ	0.04	ppm		11/11/21 11:25	11/12/21 16:12	
Hexythiazox	< LOQ	0.04	ppm		11/11/21 11:25	11/12/21 20:39	
Imazalil	< LOQ	0.04	ppm		11/11/21 11:25	11/12/21 20:39	
Imidacloprid	< LOQ	0.04	ppm		11/11/21 11:25	11/12/21 20:39	
Kresoxim-methyl	< LOQ	0.04	ppm		11/11/21 11:25	11/12/21 16:12	
Metalaxyl	< LOQ	0.04	ppm		11/11/21 11:25	11/12/21 20:39	
Malathion	< LOQ	0.04	ppm		11/11/21 11:25	11/12/21 16:12	
Methiocarb	< LOQ	0.04	ppm		11/11/21 11:25	11/12/21 20:39	
Methomyl	< LOQ	0.04	ppm		11/11/21 11:25	11/12/21 20:39	
Myclobutanil	< LOQ	0.04	ppm		11/11/21 11:25	11/12/21 20:39	



Eric Wendt
Chief Science Officer - 11/16/2021

These results relate only to the sample included on this report. The report may not be reproduced except in full, without the written permission of Green Leaf Lab.

This is for informational testing and is not compliance testing. Lab results apply to the sample as received.



Quality Control Pesticide Analysis (Continued)

Batch: 2146030 - 203 (Continued)

Blank(2146030-BLK1)							
Analyte	Result	LOQ	Units	%Recovery Limits	Extracted	Analyzed	Notes
Methyl parathion	< LOQ	0.04	ppm		11/11/21 11:25	11/12/21 16:12	
Naled	< LOQ	0.04	ppm		11/11/21 11:25	11/12/21 20:39	
MGK-264	< LOQ	0.04	ppm		11/11/21 11:25	11/12/21 16:12	
Oxamyl	< LOQ	0.04	ppm		11/11/21 11:25	11/12/21 20:39	
Paclobutrazol	< LOQ	0.04	ppm		11/11/21 11:25	11/12/21 20:39	
Phosmet	< LOQ	0.04	ppm		11/11/21 11:25	11/12/21 20:39	
Permethrins	< LOQ	0.04	ppm		11/11/21 11:25	11/12/21 16:12	
Piperonyl butoxide	< LOQ	0.1	ppm		11/11/21 11:25	11/12/21 20:39	
Prallethrin	< LOQ	0.04	ppm		11/11/21 11:25	11/12/21 20:39	
Propiconazole	< LOQ	0.04	ppm		11/11/21 11:25	11/12/21 16:12	
Propoxur	< LOQ	0.04	ppm		11/11/21 11:25	11/12/21 20:39	
Pyrethrins	< LOQ	0.1	ppm		11/11/21 11:25	11/12/21 20:39	
Pyridaben	< LOQ	0.04	ppm		11/11/21 11:25	11/12/21 20:39	
Spinosad	< LOQ	0.04	ppm		11/11/21 11:25	11/12/21 20:39	
Spiromesifen	< LOQ	0.04	ppm		11/11/21 11:25	11/12/21 20:39	
Spirotetramat	< LOQ	0.04	ppm		11/11/21 11:25	11/12/21 20:39	
Spiroxamine	< LOQ	0.04	ppm		11/11/21 11:25	11/12/21 20:39	
Tebuconazole	< LOQ	0.04	ppm		11/11/21 11:25	11/12/21 20:39	
Thiacloprid	< LOQ	0.04	ppm		11/11/21 11:25	11/12/21 20:39	
Thiamethoxam	< LOQ	0.04	ppm		11/11/21 11:25	11/12/21 20:39	
Trifloxystrobin	< LOQ	0.04	ppm		11/11/21 11:25	11/12/21 20:39	

LCS(2146030-BS1)							
Analyte	% Recovery	LOQ	Units	%Recovery Limits	Extracted	Analyzed	Notes
Abamectin	121	0.04	ppm	70-130	11/11/21 11:25	11/12/21 21:02	
DDVP (Dichlorvos)	87.0	0.04	ppm	70-130	11/11/21 11:25	11/12/21 21:02	
Acephate	93.7	0.04	ppm	70-130	11/11/21 11:25	11/12/21 21:02	
Acequinocyl	75.3	0.04	ppm	52-97	11/11/21 11:25	11/12/21 21:02	
Acetamiprid	94.1	0.04	ppm	70-130	11/11/21 11:25	11/12/21 21:02	
Aldicarb	91.3	0.04	ppm	70-130	11/11/21 11:25	11/12/21 21:02	
Azoxystrobin	99.6	0.04	ppm	70-130	11/11/21 11:25	11/12/21 21:02	
Bifenazate	99.9	0.04	ppm	70-130	11/11/21 11:25	11/12/21 21:02	
Bifenthrin	84.1	0.04	ppm	70-130	11/11/21 11:25	11/12/21 21:02	
Boscalid	82.4	0.04	ppm	70-130	11/11/21 11:25	11/12/21 16:34	
Carbaryl	86.7	0.04	ppm	70-130	11/11/21 11:25	11/12/21 21:02	
Carbofuran	94.7	0.04	ppm	70-130	11/11/21 11:25	11/12/21 21:02	
Chlorantraniliprole	73.8	0.04	ppm	26.2-145	11/11/21 11:25	11/12/21 21:02	
Chlorfenapyr	105	0.04	ppm	71-140	11/11/21 11:25	11/12/21 16:34	
Chlorpyrifos	98.4	0.04	ppm	70-130	11/11/21 11:25	11/12/21 21:02	



Eric Wendt
Chief Science Officer - 11/16/2021

These results relate only to the sample included on this report. The report may not be reproduced except in full, without the written permission of Green Leaf Lab.

This is for informational testing and is not compliance testing. Lab results apply to the sample as received.



Quality Control Pesticide Analysis (Continued)

Batch: 2146030 - 203 (Continued)

LCS(2146030-BS1)									
Analyte	% Recovery	LOQ	Units	%Recovery Limits	Extracted	Analized	Notes		
Clofentezine	99.1	0.04	ppm	14.4-62.3	11/11/21 11:25	11/12/21 21:02	BSH		
Cyfluthrin	74.7	0.04	ppm	70-130	11/11/21 11:25	11/12/21 16:34			
Cypermethrin	78.7	0.04	ppm	70-130	11/11/21 11:25	11/12/21 16:34			
Daminozide	28.1	0.04	ppm	11-74.6	11/11/21 11:25	11/12/21 21:02			
Diazinon	90.9	0.04	ppm	70-130	11/11/21 11:25	11/12/21 21:02			
Dimethoate	87.6	0.04	ppm	70-130	11/11/21 11:25	11/12/21 21:02			
Ethoprophos	92.3	0.04	ppm	70-130	11/11/21 11:25	11/12/21 21:02			
Etofenprox	90.5	0.04	ppm	70-130	11/11/21 11:25	11/12/21 21:02			
Etoxazole	96.5	0.04	ppm	70-130	11/11/21 11:25	11/12/21 21:02			
Fenoxycarb	88.6	0.04	ppm	70-130	11/11/21 11:25	11/12/21 21:02			
Fenpyroximate	89.2	0.04	ppm	50-100	11/11/21 11:25	11/12/21 21:02			
Fipronil	87.8	0.04	ppm	70-130	11/11/21 11:25	11/12/21 16:34			
Flonicamid	80.9	0.04	ppm	70-130	11/11/21 11:25	11/12/21 21:02			
Fludioxonil	83.6	0.04	ppm	70-130	11/11/21 11:25	11/12/21 16:34			
Hexythiazox	98.3	0.04	ppm	66-116	11/11/21 11:25	11/12/21 21:02			
Imazalil	91.9	0.04	ppm	58-96.4	11/11/21 11:25	11/12/21 21:02			
Imidacloprid	81.5	0.04	ppm	70-130	11/11/21 11:25	11/12/21 21:02			
Kresoxim-methyl	83.7	0.04	ppm	70-130	11/11/21 11:25	11/12/21 16:34			
Metalaxyl	96.4	0.04	ppm	70-130	11/11/21 11:25	11/12/21 21:02			
Malathion	92.5	0.04	ppm	70-130	11/11/21 11:25	11/12/21 16:34			
Methiocarb	87.1	0.04	ppm	70-130	11/11/21 11:25	11/12/21 21:02			
Methomyl	98.4	0.04	ppm	70-130	11/11/21 11:25	11/12/21 21:02			
Myclobutanil	86.2	0.04	ppm	70-130	11/11/21 11:25	11/12/21 21:02			
Methyl parathion	72.9	0.04	ppm	61-124	11/11/21 11:25	11/12/21 16:34			
Naled	94.4	0.04	ppm	36-93	11/11/21 11:25	11/12/21 21:02	BSH		
MGK-264	98.3	0.04	ppm	70-130	11/11/21 11:25	11/12/21 16:34			
Oxamyl	97.4	0.04	ppm	70-130	11/11/21 11:25	11/12/21 21:02			
Paclobutrazol	90.2	0.04	ppm	70-130	11/11/21 11:25	11/12/21 21:02			
Phosmet	86.0	0.04	ppm	70-130	11/11/21 11:25	11/12/21 21:02			
Permethrins	75.7	0.04	ppm	70-130	11/11/21 11:25	11/12/21 16:34			
Piperonyl butoxide	95.8	0.1	ppm	57-134	11/11/21 11:25	11/12/21 21:02			
Prallethrin	84.8	0.04	ppm	70-130	11/11/21 11:25	11/12/21 21:02			
Propiconazole	76.1	0.04	ppm	67-119	11/11/21 11:25	11/12/21 16:34			
Propoxur	84.8	0.04	ppm	70-130	11/11/21 11:25	11/12/21 21:02			
Pyrethrins	54.1	0.1	ppm	40-109	11/11/21 11:25	11/12/21 21:02			
Pyridaben	99.9	0.04	ppm	70-130	11/11/21 11:25	11/12/21 21:02			
Spinosad	83.6	0.04	ppm	70-130	11/11/21 11:25	11/12/21 21:02			
Spiromesifen	94.0	0.04	ppm	70-130	11/11/21 11:25	11/12/21 21:02			



ISO 17025
ACCREDITED
LABORATORY

Eric Wendt
Chief Science Officer - 11/16/2021

These results relate only to the sample included on this report. The report may not be reproduced except in full, without the written permission of Green Leaf Lab.

This is for informational testing and is not compliance testing. Lab results apply to the sample as received.



Quality Control Pesticide Analysis (Continued)

Batch: 2146030 - 203 (Continued)

LCS(2146030-BS1)							
Analyte	% Recovery	LOQ	Units	%Recovery Limits	Extracted	Analyzed	Notes
Spirotetramat	89.2	0.04	ppm	70-130	11/11/21 11:25	11/12/21 21:02	
Spiroxamine	103	0.04	ppm	72-153	11/11/21 11:25	11/12/21 21:02	
Tebuconazole	92.3	0.04	ppm	70-130	11/11/21 11:25	11/12/21 21:02	
Thiacloprid	85.0	0.04	ppm	70-130	11/11/21 11:25	11/12/21 21:02	
Thiamethoxam	93.9	0.04	ppm	70-130	11/11/21 11:25	11/12/21 21:02	
Trifloxystrobin	94.5	0.04	ppm	70-130	11/11/21 11:25	11/12/21 21:02	

Moisture Content

Batch: 2146032 - 103

Reference(2146032-SRM1)							
Analyte	% Recovery	LOQ	Units	%Recovery Limits	Extracted	Analyzed	Notes
Percent Moisture	102		%	80-120	11/11/21 15:36	11/11/21 15:36	

Reference(2146032-SRM2)							
Analyte	% Recovery	LOQ	Units	%Recovery Limits	Extracted	Analyzed	Notes
Percent Moisture	105		%	80-120	11/11/21 15:36	11/11/21 15:36	



Eric Wendt
Chief Science Officer - 11/16/2021

These results relate only to the sample included on this report. The report may not be reproduced except in full, without the written permission of Green Leaf Lab.

This is for informational testing and is not compliance testing. Lab results apply to the sample as received.



Notes and Definitions

- ATM Non-cannabis matrix related interference or suppression of Internal standard
- BLI Baseline Interference - Cannabinoid peak interference in chromatographic baseline affecting QC recovery .
- BLK Analyte detected in method blank, but not associated samples.
- BSH Blank Spike High - Blank Spike recovery above method limit. no detections in samples.
- BSL Blank Spike Low - Blank Spike recovery below lower method limit, analyte chromatography reviewed manually for all samples.
- C Interference due to co-elution
- CBD Interference due to co-elution
- CV1 CBD matrix interference on GC Pest chromatography
- CV2 CCV was above acceptance criteria, Non-detect samples are considered acceptable.
- INF CCV was below acceptance criteria, sample still exceeds regulatory limit.
- ISH One or more QC falls outside acceptance criteria. Data entered into LIMS for informational purposes only.
- ISL Internal Standard concentration is above acceptance criteria.
- MSH Internal Standard concentration is below acceptance criteria.
- MSI Matrix Spike High - Matrix Spike recovery above method limits.
- MSL Matrix Spike Interference - Matrix spike source sample contains analyte hit above calibration affecting recovery accuracy in Matrix Spike.
- TPP
- U Matrix Spike Low - Matrix Spike recovery below lower method limit, analyte chromatography reviewed manually for all samples.
Internal Standard concentration outside control limit due to matrix interference



Eric Wendt
Chief Science Officer - 11/16/2021

These results relate only to the sample included on this report. The report may not be reproduced except in full, without the written permission of Green Leaf Lab.

This is for informational testing and is not compliance testing. Lab results apply to the sample as received.